



1-POST LIFT
TW125M-230 / TW125M-230-G
(Lifting capacity: 2500 kg)

TW125M & **TW125M-G**

INSTALLATION, OPERATION AND MAINTENANCE MANUAL



Always read these operating instructions carefully before operating the lift. Follow the instructions carefully.

Table of contents

1. General information	1
2. Identification of the operating instructions	1
3. Technical data	1
4. Modification of the product	2
5. Safety-related information	2
5.1 Safety instructions	2
5.2 Warnings and symbols	4
6. Compliance with the product	5
7. Technical specifications	5
7.1 Machine description	5
8. Post lift assembly	5
8.1 Before installation	5
8.2 Completeness of all components	6
8.3 Floor conditions	6
8.4 Assembly instructions	6
8.5 Checkpoints after Assembly	10
9. Commissioning	10
9.1 Safety precautions	10
9.2 Description of the control unit (control box)	11
9.3 Lifting and lowering procedure	13
9.4 Operating instructions	13
9.5 Emptying the hydraulic oil reservoir	14
10. Troubleshooting	15
11. Maintenance	16
11.1 Daily inspection and maintenance of the post lift	16
11.2 Weekly inspection and maintenance of the post lift	16
11.3 Monthly inspection and maintenance of the post lift	16
11.4 Annual inspection and maintenance of the post lift	16
11.5 Maintenance intervals	16
12. What to do in the event of a malfunction	17
13. Disassembly	18
14. Disposal	19
14.1 Ecological disposal methods	19
14.2 Packaging material	19

14.3 Oils, grease and other chemical substances.....19

14.4 Metals/electrical waste19

15.Appendix20

15.1 Packing list20

15.2 Dimensions of the post lift.....20

15.3 Foundation requirements and working area21

15.4 Circuit diagram 230 V.....23

15.5 Hydraulic diagram.....24

15.6 Hydraulic system25

15.7 Detailed drawing, parts and spare parts list26

Further attachment:

- **EU declaration of conformity**

Important information

ASSEMBLY



You can find the assembly video for this lift on YouTube:

<https://www.youtube.com/watch?v=kMNY3OYO-JQ>

or scan the QR code.



PRODUCT PRESENTATION



You can find the product presentation video for this lift on YouTube:

<https://www.youtube.com/watch?v=i8A0gINR9J8>

or scan the QR code.





TIPS & TRICKS



In the "Tips & Tricks" section we show you simple solutions to work even more efficiently with your TWIN BUSCH® products.

<https://www.twinbusch.co.uk/1-post-lifts/1-post-lift-2-5-tonnes-Portable-Ultra-mobile::1.html#horizontalTab4>

24/7 Service Centre:



Our **24/7 Self-Service Centre** is a mobile website for self-diagnosis in the event of problems with your TWIN BUSCH® post lift, tyre changer or wheel balancer. There you will find an extensive video collection covering a wide range of topics relevant to your TWIN BUSCH® product, from fine tuning and maintenance to component replacement.

The **24/7 Self-Service Centre** is a versatile tool that helps you learn how to maintain and repair your TWIN BUSCH® post lift, tyre changer or wheel balancer yourself.

To open the page on your mobile device, please visit [twinbusch.com/qr](https://www.twinbusch.com/qr) or scan the QR code opposite.

For TWIN BUSCH® post lifts delivered from mid-2020 onwards, you will also find the QR code on a sticker on the control box.

1. General information

The **TW125M / TW125M-G** mobile 1-post lift has a frame height of only 85 mm and a swing-in height of 98 mm. This makes it one of the flattest 1-post lifts on the market.

Ideal for confined spaces, it can be moved easily like a pallet truck and can be used on any level, sufficiently solid surface, e.g. paving stones, concrete and asphalt.

Special features of the product:

- **1A workmanship with CE certificate for UVV approval**
- Production in accordance with **ISO 9001**
- Hydraulic cylinder for powerful lifting
- Height-adjustable mounting plates
- Telescopic support arms
- Mechanical safety stops
- Manual release of safety catches
- High-quality support columns made of special rolled profile
- Aluminium motor and 24 V control
- Cover plate in front of the column (to protect the cylinder)

2. Identification of the operating instructions

Operating instructions **TW125M & TW125M-G**

of TWIN BUSCH® GmbH
Ampèrestraße 1
D-64625 Bensheim

Telephone: +49 6251-70585-0
Fax: +49 6251-70585-29
Website: www.twinbusch.de
Email: info@twinbusch.de

TWIN BUSCH® UK Ltd.
9, Linnell Way
Telford Way Industrial Estate
NN16 8PS, Kettering (Northants)

Phone: +44 (0) 1536 522 960
Internet: www.twinbusch.co.uk
Email: info@twinbusch.co.uk

Status: -00, 19.01.2026

File: TW125M_TW125M-G_1-Post_Lift_Instruction_manual_uk_00_20260119.pdf

3. Technical data

Power supply	230 V
Fuse protection	16 A (C/slow-blow)
Load capacity CE	2,500 kg
Lifting height max.	1830–1930 mm
Motor power	2.2 kW
Protection rating	IP 54
Lifting time	approx. 35 sec.

Lowering time	approx. 30 sec.
Swing-in height	98 mm
Net weight	720 kg
Noise level	< 70 db
Working environment	Working temperature: -15°C to +40°C
	Relative humidity: 30 % to 85 %

4. Modification of the product

Improper use, as well as modifications, conversions and additions to the post lift and all its components that have not been agreed with the manufacturer, are not permitted. The manufacturer accepts no liability for improper installation, operation or overloading. Improper use will also invalidate the CE certification and the validity of the expert opinion. If you wish to make any changes, please contact your dealer or the expert staff at TWIN BUSCH® GmbH beforehand.

5. Safety-related information

Read the operating instructions carefully before putting the post lift into operation. Keep the instructions for future reference. Follow the instructions carefully to achieve the best performance from the machine and to avoid damage due to personal negligence.

Check all connections and components thoroughly for damage. The post lift may only be put into operation if it is in a safe operating condition.

5.1 Safety instructions

- Do not install the post lift on an asphalt surface.
- Read and understand the safety instructions before operating the post lift.
- Under no circumstances leave the control unit while the post lift is in motion.
- Keep your hands and feet away from moving parts. Pay particular attention to your feet when lowering the lift.
- The post lift may only be operated by trained personnel.
- Unauthorised persons are not permitted near the post lift.
- Wear suitable work clothing.
- The area around the post lift should always be kept free of obstructions.
- The post lift is designed for lifting/hoisting motor vehicles that do not exceed the maximum permissible weight.
- Before entering a raised vehicle or using the post lift for the HU (PTI), a special risk assessment must be carried out. Special equipment must be used to access the raised vehicle.
- Always ensure that all safety precautions have been taken before working near or under the vehicle.
- **Never remove safety-related components from the post lift.**
- **Do not use the post lift if safety-related components are missing or damaged.**

- Under no circumstances move the vehicle or remove heavy objects from the vehicle that could cause significant weight differences while the vehicle is on the post lift.
- Always check the mobility of the post lift to ensure its performance. Ensure regular maintenance. If any irregularities occur, stop working with the post lift immediately and contact your dealer.
- Lower the post lift completely when it is not in use. Do not forget to disconnect the power supply.
- If you are not going to use the post lift for a longer period of time, then:
 - a. Disconnect the post lift from the power source
 - b. Empty the oil tank
 - c. Lubricate the moving parts with lubricating oil/grease

Caution: To protect the environment, dispose of used oil in the prescribed manner.

5.2 Warnings and symbols

All warning notices are clearly visible on the post lift to ensure that the user operates the device in a safe and appropriate manner.

The warning signs must be kept clean and replaced if they are damaged or missing. Please read the signs carefully and memorise their meaning for future use.



Read instructions and safety instructions carefully before use!



The lift may only be operated by qualified personnel!



Repairs and maintenance may only be carried out by specialised personnel, never put safety devices out of operation!



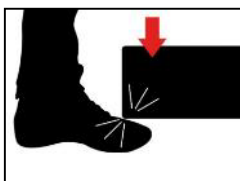
Only specialised personnel allowed in the vicinity of the lift!



Escape routes Always keep them clear!



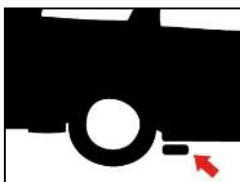
It is forbidden for persons to stand under the lifting platform (when lifting or lowering)!



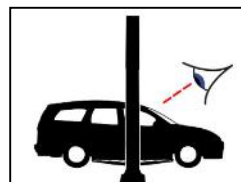
Watch your feet when your feet when lowering! Danger of crushing!



Climbing on the lifting platform is strictly prohibited!



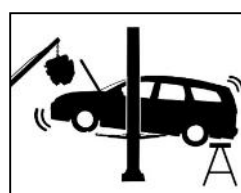
Observe the vehicle manufacturer's mounting points!



After briefly lifting the vehicle, check that it is securely seated!



Do not exceed the specified load capacity!



The vehicle may tip over when installing or removing heavy parts!



Use only on level ground!



Do not manoeuvre with a vehicle on the lift!



Protect against moisture! Electrical connections must be dry!



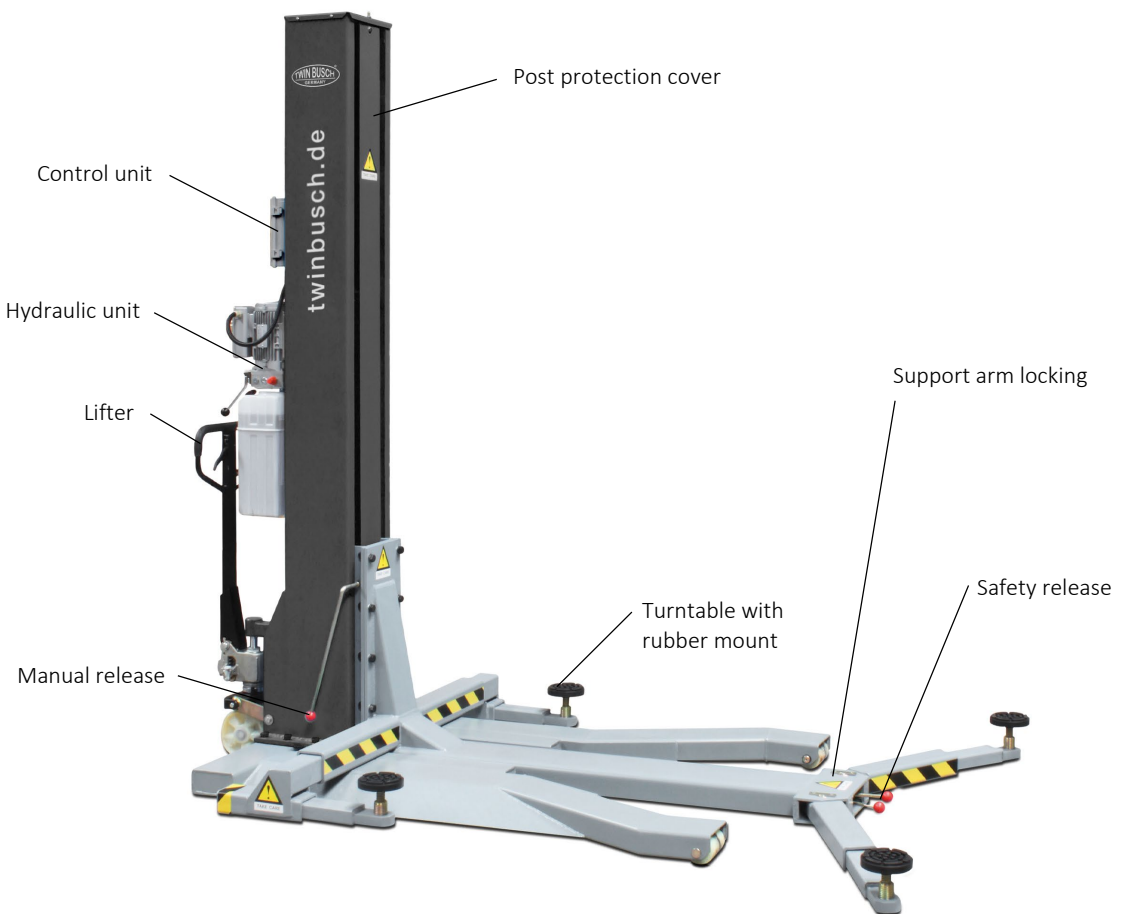
Avoid shaking the vehicle vigorously!

6. Compliance with the product

The TW125M / TW125M-G single-post lift is CE certified and complies with the Machinery Directive 2006/42/EC, meeting the following standards: Post lifts EN 1493:2022, Safety of machinery EN 60204-1:2018 (see: EU Declaration of Conformity at the end of the operating instructions).

7. Technical specifications

7.1 Machine description



8. Post lift assembly

8.1 Before installation

Required tools and equipment:

- Lifting tool (e.g. forklift truck)
- Hammer, side cutters
- Phillips and flat-head screwdrivers
- Set of Allen keys
- Spanner sockets and open-ended spanners
- Hammer drill
- HLP 32 hydraulic oil

8.2 Completeness of all components

Unpack all components of the post lift and check that all components are present using the packing list (see Appendix: Packing list).

8.3 Floor conditions

The post lift must be installed on a solid foundation with a compressive strength of more than 3 kg/mm², a flatness of less than 5 mm and a minimum thickness of 200 mm. Detailed information can be found also on our website at www.twinbusch.co.uk.

Note: If a new concrete floor is to be poured, it must be left to rest for at least 28 days before a post lift can be installed.

8.4 Assembly instructions

- 1) Remove the packaging and take out the box containing the accessories and cover plates. Read and understand the operating instructions before you start Assembly.
- 2) Use a motorised crane to set the column aside. If you do not have a motorised crane or other lifting equipment available, we recommend that at least 3 people are involved in the Assembly. To set the column aside, it must be turned slightly on the floor. Therefore, place something underneath it when lowering it, e.g. rubber blocks, so that the floor is not scratched.



Illustration: Positioning the column

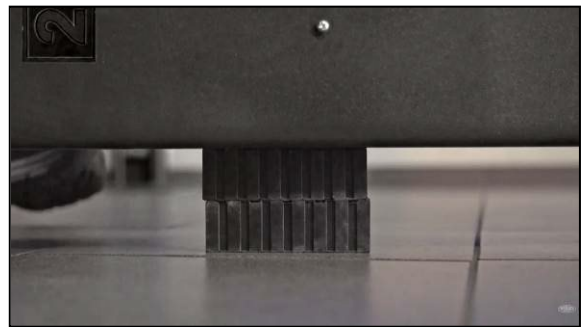
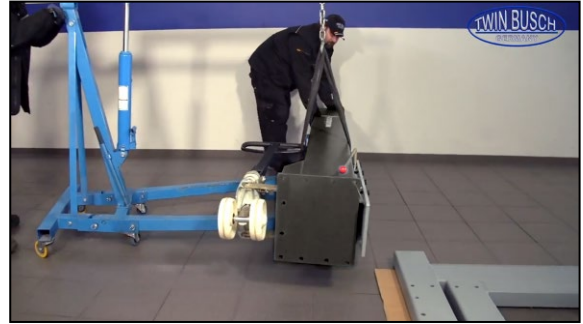


Illustration: Rubber blocks

- 3) Next, lift the support arm unit off the package. The best way to do this is to place a lifting strap around the support arm unit and set it aside. Again, place something underneath to protect the floor. We recommend rubber blocks for this as well.
- 4) Remove the packaging from the base. To remove the base from the pallet, place something underneath it again to prevent scratching the floor.
- 5) Open the box containing the motor unit. Inside you will find a bag with the mounting screws. The black screws are needed in the next step to attach the column to the base. The chrome-plated screws are needed later to assemble the motor block.
- 6) Place the column on the base. To do this, lift the column again with the motor crane to align it. Align the column so that the holes are aligned after the column has been erected.



Illustration: Base



- 7) Cut the wire that has been securing the lifting carriage for transport.

Note: For your own safety, we recommend that at least three people are present to erect the column. Make sure that the column does not tip over accidentally and screw in the 10 screws supplied by hand.

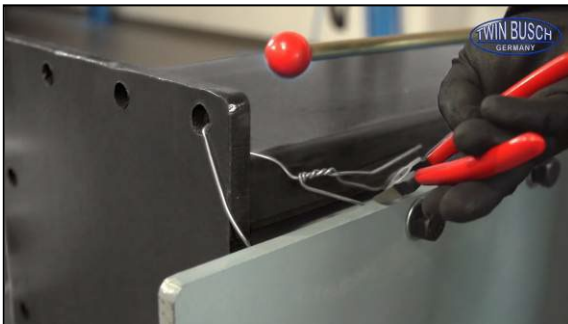


Illustration: Wire



Illustration: Erecting the column

- 8) Tighten the 10 hexagon screws with a torque of 200 Nm.



Illustration: Tightening the column

- 9) Remove the control unit and install it. The screws for installing the control unit are already pre-installed on the column. To install, the two loose cables for the limit switch must be routed from the column to the control unit. The control unit can then be screwed onto the column.

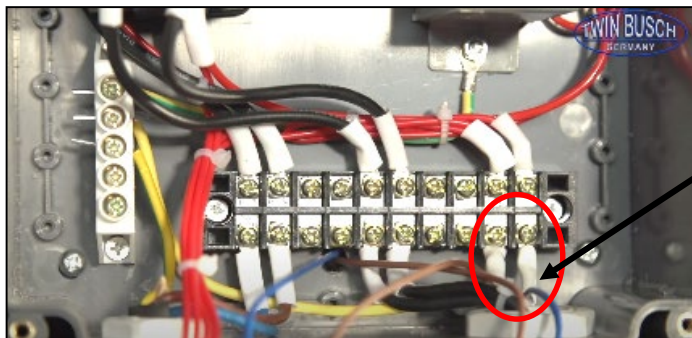


Illustration: Screws mounted on the column



Illustration: Routing the cables through the switch box

- 10) After installing the switch box, remove the plastic cover from the cross rail. Screw the two cables for the limit switch to the right side of the rail.
This completes the electrical wiring on the control unit and you can then close the control unit.



Cable connection

Illustration: Electrical wiring

- 11) Carefully remove the motor unit from the packaging and use the screws and nuts supplied to assemble it. Hang the motor unit on the column.

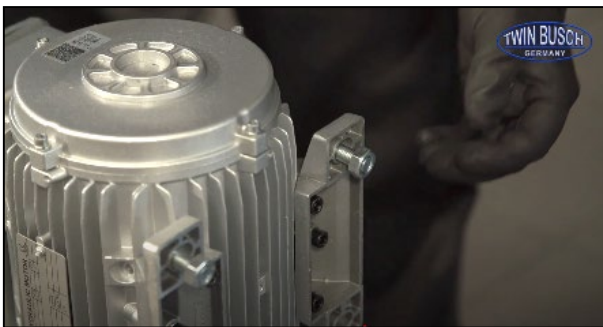


Illustration: Motor unit

The cable coming out of the bottom of the switch box is the cable for the motor. Set this cable aside and finish attaching the motor unit to the column.

- 12) Open the box on the motor unit. There, open the two upper right terminals to which the red test cables are connected.
Remove the red test cables leading out of the box.

Note: Make a note of exactly where these were connected. To make the work easier, you can remove the capacitor on the right.

Insert the cables for the motor into the box. Start with the yellow-green protective conductor, which is screwed into the back of the box. Then follow with the two motor cables, which are screwed into the connections that have already been opened.

Note: It does not matter which motor cable is connected to which of the two terminals. Replace the screws and screw the box shut.

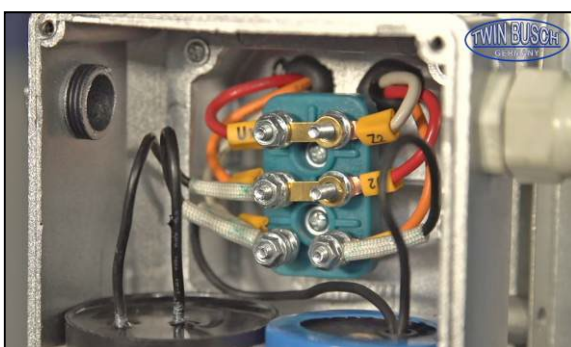


Illustration: Switch box on motor unit

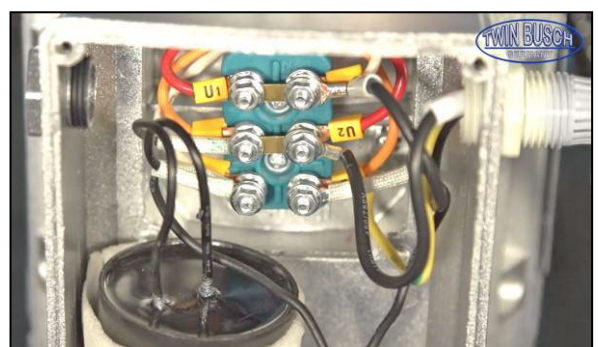


Illustration: Assembled cables

The cable coming out of the bottom of the switch box is the cable for the motor. Set this cable aside and finish attaching the motor unit to the column.

- 13) Tighten the connection on the motor unit.

Note: When screwing on the oil hose, hold the hose in position so that it points straight down after tightening.

Screw the hose tight.

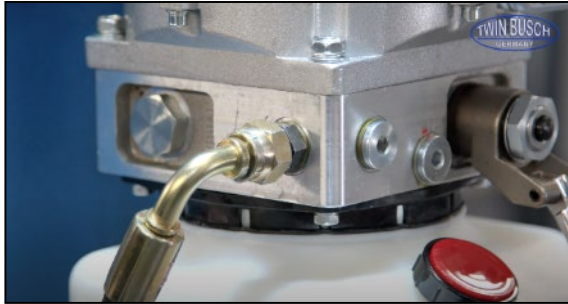


Illustration: Connecting the hydraulic hose

- 14) Filling the hydraulic oil tank

The hydraulic oil tank has a capacity of approx. 10 litres. To ensure proper operation of the post lift, you should fill the oil tank to 80 % capacity with hydraulic oil.

Hydraulic oil type: HLP 32.



Illustration: Filling with HLP 32

- 15) Remove the packaging from the support arm unit and pull out the rear support arms. Then remove the 8 pre-assembled screws for attaching the support arm unit. Connect the column to the support arm unit.

- 16) Connect the post lift to the power supply to raise the lifting carriage slightly for further assembly. Press the button on the control unit until the lifting carriage is at the same height as the support arm unit.

Note: If you move too far, the lifting carriage can be lowered again using the release lever.

- 17) Replace the screws that were removed earlier.



Illustration: Tightening the screws

18) Raise the platform a little to remove the remaining packaging. Raise the platform all the way to the top and test the limit switch.

Once the limit switch has successfully stopped the platform automatically, you can use the lowering lever on the motor unit to lower the platform to the top safety stop.

Press the release and lowering levers simultaneously to lower the post lift again.

8.5 Checkpoints after Assembly

S/N	Check	YES	NO
1	Is the base plate aligned?		
2	Are the ground anchors securely screwed in place?		
3	Is the oil hose connected correctly?		
4	Are the column and support arm securely mounted?		
5	Are the support arms correctly and securely mounted?		
6	Are the electrical connections correct?		
7	Are all the joints securely screwed together?		
8	Are all parts that need to be greased greased?		

9. Commissioning

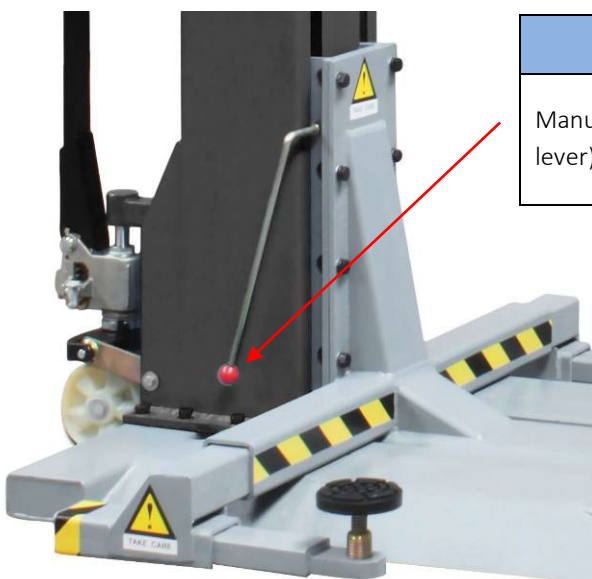
9.1 Safety precautions

- a) **If the safety devices are defective or show any signs of damage, the post lift must not be put into operation under any circumstances!**
- b) Check all hydraulic line connections to ensure they are secure and in good working order. If there are no leaks, the lifting process can be started.
- c) Only the operator should be near the post lift during a lifting or lowering operation. Always ensure that no persons are in the danger zone.
- d) Once the desired lifting height has been reached and the safety catches are engaged, switch off the power supply to the post lift to prevent accidents caused by unintentional operation by other persons.
- e) Before sliding the post lift under a motor vehicle, make sure that both arms are aligned with each other and free of obstacles.

9.2 Description of the control unit (control box)



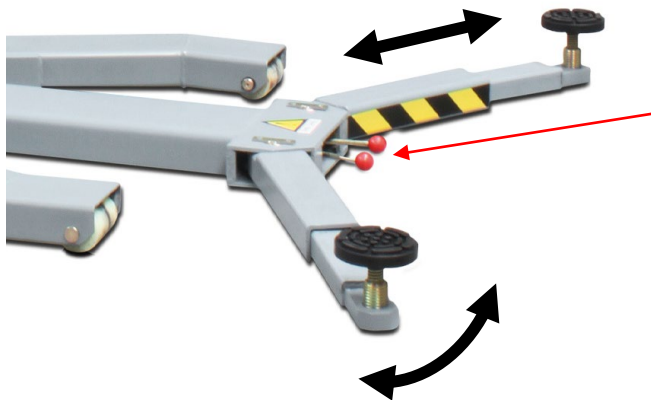
Description	Function
Main switch	Switch on or off.
UP button (push button)	Lift the post lift.
Manual release (release lever)	Lower the post lift by simultaneously pressing the release and unlocking levers.



Description	Function
Manual release (release lever)	Manually unlock the safety catches by pulling the unlocking lever.

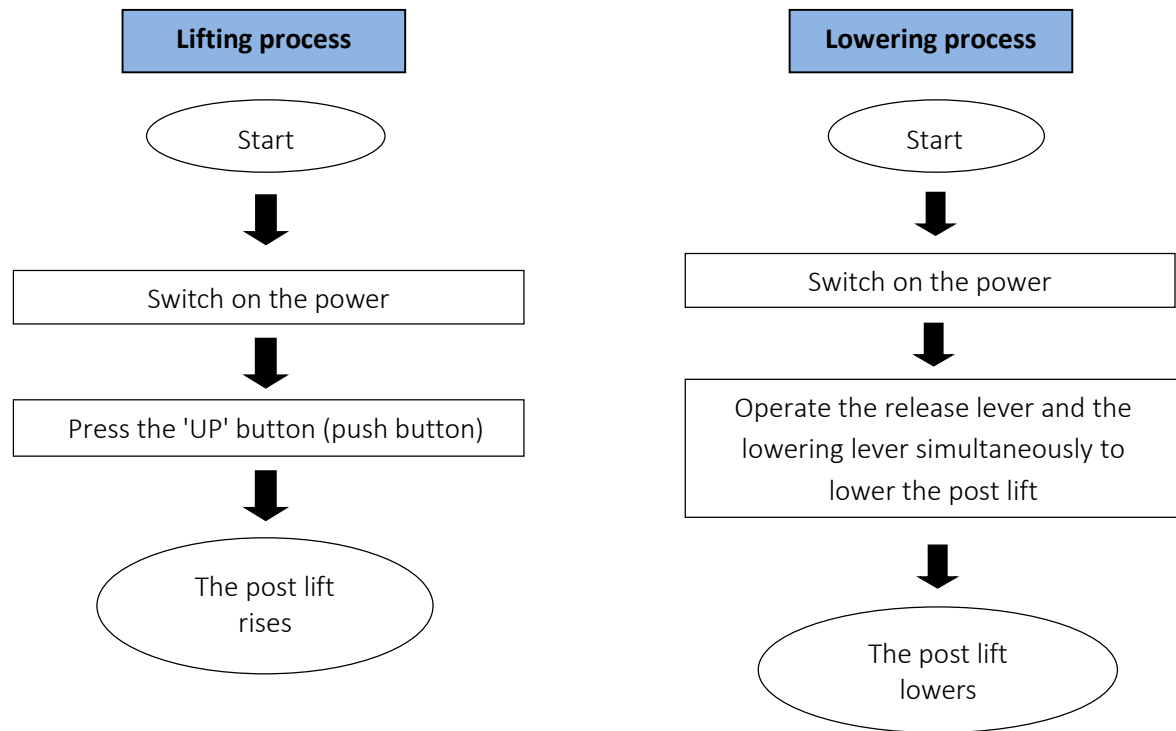


Description	Function
Handle	Lower the post lift by pressing the pressure release handle.
Lifter	The post lift can be moved easily like a pallet truck and can be used flexibly on any sufficiently stable floor.



Description	Function
Safety latch	The safety bolts allow you to adjust and lock the support arms.

9.3 Lifting and lowering procedure



9.4 Operating instructions

9.4.1 Lifting process

1. Read and understand the operating instructions before starting work.
2. Connect the power supply and turn the main switch to ON.
3. Operate the pressure release handle on the swivelling lift and raise the post lift by moving the lift up and down.
4. Slide the post lift under the vehicle.
5. Operate the pressure release handle on the swivel lift to lower the post lift.
6. Press the "UP" button until you have reached approx. 10-15 cm.
7. Pull the safety latches to adjust and precisely position the support arms.
8. Press the "UP" button until the desired lift height is reached.
9. Set the main switch to OFF and begin working on or under the vehicle.

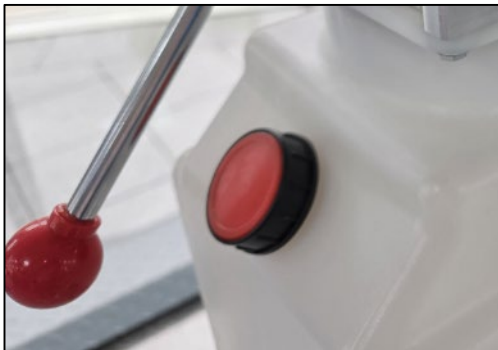
9.4.2 Lowering

1. Connect the power supply and turn the main switch to ON.

2. Press the release lever and the lowering lever simultaneously to lower the post lift.
3. Operate the swivelling jack up and down several times until the post lift is clear of the ground and pull the post lift out from under the vehicle.
4. The vehicle can now be removed.

Alternatively, you can also drive the vehicle away. In this case, however, the post lift must still be firmly on the ground and must not be released.

9.5 Emptying the hydraulic oil reservoir



1. Carefully remove the filler cap from the hydraulic oil reservoir.
2. Use a suitable oil extraction device (e.g. model TW20810) to completely extract the oil from the reservoir.

Caution: The oil that has been removed or used oil must be disposed of properly and in an environmentally friendly manner. Please observe the applicable regulations for the disposal of used oil.

10. Troubleshooting

Caution: Do not hesitate to contact the expert staff at TWIN BUSCH® GmbH if you are unable to rectify a fault yourself. We will be happy to help you solve your problem. In this case, document the fault and send us pictures and a precise description of the fault so that we can identify and rectify the cause as quickly as possible.

The following table lists possible faults, their causes and the corresponding troubleshooting steps for faster identification and self-repair.

PROBLEM	CAUSE	SOLUTION
Unusual noise.	Wear on the inside of the column.	Grease the inside of the column.
	Contamination in the column.	Remove the dirt.
The motor cannot be started and the post lift does not rise.	The cable connections are loose.	Check the cables and reconnect them.
	The motor is defective.	Replace it.
	The limit switch is defective/damaged or the cable connection is loose.	Reconnect the cables or replace the limit switch.
The motor is running, but the post lift does not move up.	The motor is running backwards/in the wrong direction.	Check the cable connection.
	The pressure relief valve is loose or dirty.	Clean or tighten it.
	The gear pump is defective.	Replace it.
	The oil level is too low.	Top up the oil.
	The oil hose has come loose or broken off.	Secure or replace it.
The arms lower slowly after being raised.	The damping valve is loose or jammed/clogged.	Clean or secure it.
	The oil hose is leaking.	Check or replace it.
	The oil cylinder/piston is leaking.	Replace the seal.
	The directional valve is leaking.	Clean or replace it.
	The pressure relief valve is leaking.	Clean or replace it.
Lifting too slowly.	The manual or electric drain valve is leaking/dirty.	Clean or replace it.
	The oil filter is dirty or jammed.	Clean or replace it.
	Oil level is too low.	Top up the oil.
	The pressure relief valve is incorrectly installed.	Install it correctly.
	The hydraulic oil is too hot (above 45°C).	Change the oil.
Lowering too slowly.	The cylinder seal is worn.	Replace the seal.
	The throttle valve is jammed/dirty.	Clean or replace it.
	The hydraulic oil is dirty.	Change the oil.
	The drain valve is blocked.	Clean it.
The steel cable is worn.	The oil hose is damaged/kinked.	Replace it.
	It was not greased during installation or it is worn.	Replace it.

11. Maintenance

Regular maintenance of your post lift will ensure that you can use it safely for a long time. Below are suggestions for maintenance intervals and the tasks to be carried out. How often you maintain your post lift depends on the environmental conditions, the degree of contamination and, of course, the stress and strain on the post lift.

11.1 Daily inspection and maintenance of the post lift

A daily inspection of safety-related components must be carried out before each use! This can save you a lot of time due to breakdowns, major damage or even injuries.

- Check all connections and screw connections for tightness.
- Check the hydraulic system for leaks and proper functioning.
- Check that the support arm locks are functioning correctly.
- Perform a test run (without a vehicle) to check that the safety catches are working correctly.
- Clean heavily soiled lift elements.
- Lubricate all lift elements that are not well lubricated.

11.2 Weekly inspection and maintenance of the post lift

- Check the mobility of all adjustable and flexible lift elements.
- Check the condition and correct functioning of all safety-related lift elements.
- Check the hydraulic oil level (lowered lift carriage – high level, max. raised lift carriage – low level).

11.3 Monthly inspection and maintenance of the post lift

- Check all screw connections and joints for tightness.
- Check the lifting carriage, support arm bolts, support arms and all other moving lift elements for wear and lubricate them.
- Check the condition of the steel cable for signs of wear and lubricate the steel cable with low-viscosity lubricating oil.

11.4 Annual inspection and maintenance of the post lift

- Empty and clean the hydraulic oil tank and replace the hydraulic oil.
- Replace the oil filter.

11.5 Maintenance intervals

- After 12 months of operation, you must clean the hydraulic filter.
- You must also replace the hydraulic oil after 12 months.

If you follow the above maintenance intervals and maintenance activities, your post lift will remain in good condition and damage and accidents will continue to be avoided.

Note: After ten years of operation at the latest, a general assessment of the remaining service life must be carried out by a qualified technician – preferably by a specialist authorised by the manufacturer.

12. What to do in the event of a malfunction

Malfunctions of the post lift may be caused by simple errors. Use the following list *) for troubleshooting. If the cause of the fault is not listed or cannot be found, please contact the expert TWIN BUSCH® GmbH team.

Never attempt to repair the lift yourself, especially not safety devices or electrical components.

*) Points depending on the design and type of post lift





Work on electrical systems may only be carried out by a qualified electrician!

Problem: The post lift cannot be raised or lowered.

Possible causes

- No power supply available.
- Power supply interrupted.
- Main switch not switched on or defective.
- Emergency stop switch pressed or defective.
- Fuse in the power connection has tripped or is defective.
- Fuse in the switch box has tripped or is defective.

Remedy



- Check the power supply.
- Check the power cable.
- Check the main switch. 
- Unlock and check the emergency stop switch. 
- Check fuse.
- Check fuse.

Problem: Post lift cannot be raised.

Possible causes

- For three-phase current: one phase is missing.
- For three-phase current: motor rotation direction is incorrect.
- Oil pump defective.
- Emergency drain open.
- Motor is defective.
- Overload.

Remedy

- Check the power supply. 
- Check the direction of rotation and swap phases if necessary. 
- Notify TWIN BUSCH® Service.
- Close the emergency drain valve.
- Notify TWIN BUSCH® Service.
- Overload valve has opened, reduce load.

Problem: Post lift cannot be lowered.

Possible causes

- Post lift is stuck in safety detents.
- Post lift has moved into limit switch.
- Motor is defective.
- The post lift has become blocked during lowering.

Remedy

- Raise the platform slightly, pull the catches, lower.
- If necessary, release the limit switch, raise the platform 1 cm and lower it.
- Open the safety latch and lower the post lift using the emergency release.
- Raise the post lift slightly again and remove the obstacle.

13. Disassembly

The post lift may only be dismantled by qualified specialists. In particular, work on electrical components must only be carried out by qualified electricians in order to avoid the risk of electric shock or malfunction. Similarly, work on hydraulic or pneumatic systems may only be carried out by trained personnel with specific expertise in hydraulics or pneumatics. Compliance with these specifications ensures safe and proper decommissioning of the system.

- 1) Switch off the system at the main switch (OFF position) before carrying out any dismantling work.
- 2) Attach a warning sign to prevent the system from being switched back on.
- 3) Disconnect the power supply.



Caution: Improper dismantling of hydraulic components poses a risk of fatal injury. These components are under pressure (up to 200 bar).

Under no circumstances should you dismantle the hydraulic components (lift cylinders)!

These must always be uninstalled as complete components.

Post lift cylinders should only be disposed of properly by a certified company.

- 4) Empty the hydraulic oil tank and drain the oil from the hydraulic hoses. Dispose of the hydraulic oil (see **14 Disposal**).
- 5) Remove lubricants and other chemical substances. Dispose of these (see **14 Disposal**).
- 6) Remove the supports, crossbars and crossbeams from the post lift.

14. Disposal

In order to inform users how to properly dispose of the product (as required by Article 26, paragraph 1 of Legislative Decree 49/2014), the following information is provided:



The crossed-out wheeled bin symbol on the device indicates that the product must not be disposed of with residual waste (i.e. together with "mixed municipal waste"). Instead, it must be disposed of separately so that waste electrical and electronic equipment can be sent for appropriate reuse or treatment. This allows environmentally hazardous substances to be safely removed and disposed of, and reusable raw materials to be recovered and recycled.

14.1 Ecological disposal methods

- Prevent environmental pollution.
- Avoid contact with or inhalation of toxic substances such as hydraulic fluid.
- Oils and lubricants are water pollutants according to the WGH Water Protection Act. Always dispose of them in an environmentally friendly manner and in accordance with the regulations of your country.
- Mineral oil-based hydraulic oils are water pollutants and flammable. Refer to the relevant safety data sheet for disposal instructions.
- Provide suitable oil drain pans and oil binders for draining the oil.
- Ensure that no hydraulic oils, lubricants or cleaning agents contaminate the soil or enter the drainage system.

14.2 Packaging material

Do not dispose of in household waste!

The packaging material contains some recyclable materials that must not be disposed of with household waste. Dispose of the packaging material in accordance with the regulations applicable in your country.

14.3 Oils, grease and other chemical substances

- When working with oil, lubricants and other chemical substances, comply with the environmental regulations that apply to the product in question.
- Dispose of oil, lubricants and other chemical substances in accordance with the environmental regulations applicable in your country.

14.4 Metals/electrical waste

Metals/electrical waste should only be disposed of properly by a certified company.

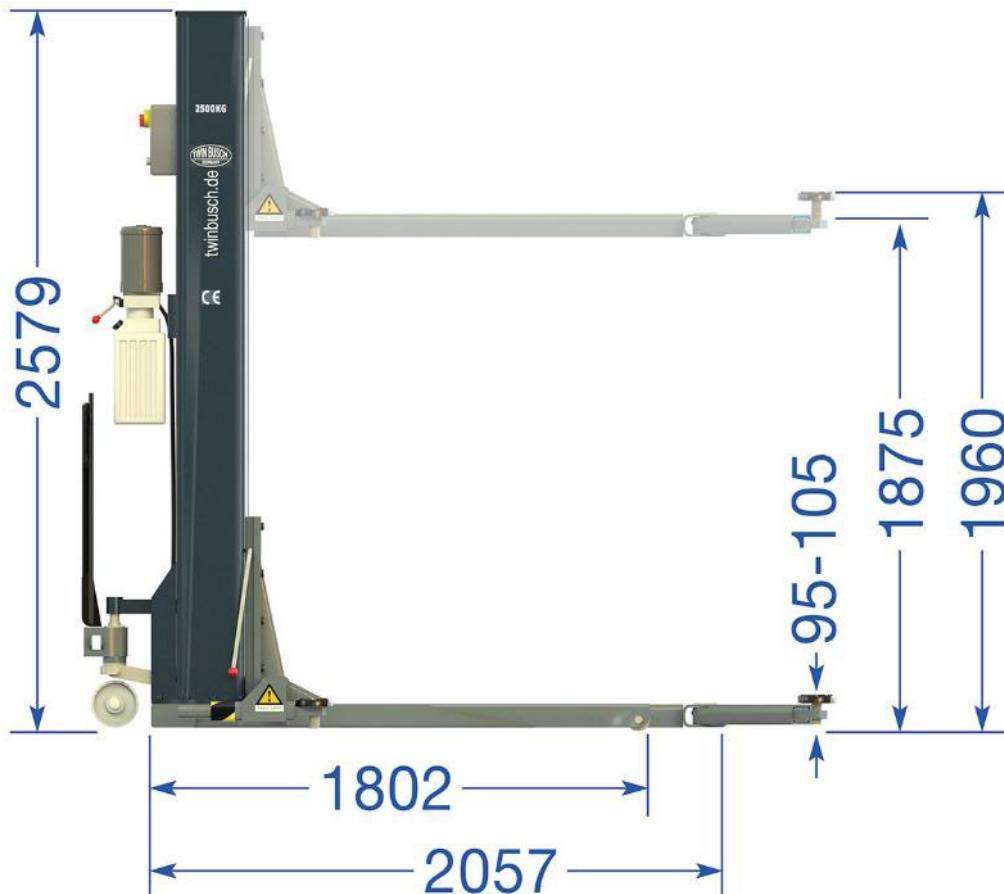
Dispose of used electrical and electronic equipment, including cables, accessories and batteries, separately from household waste.

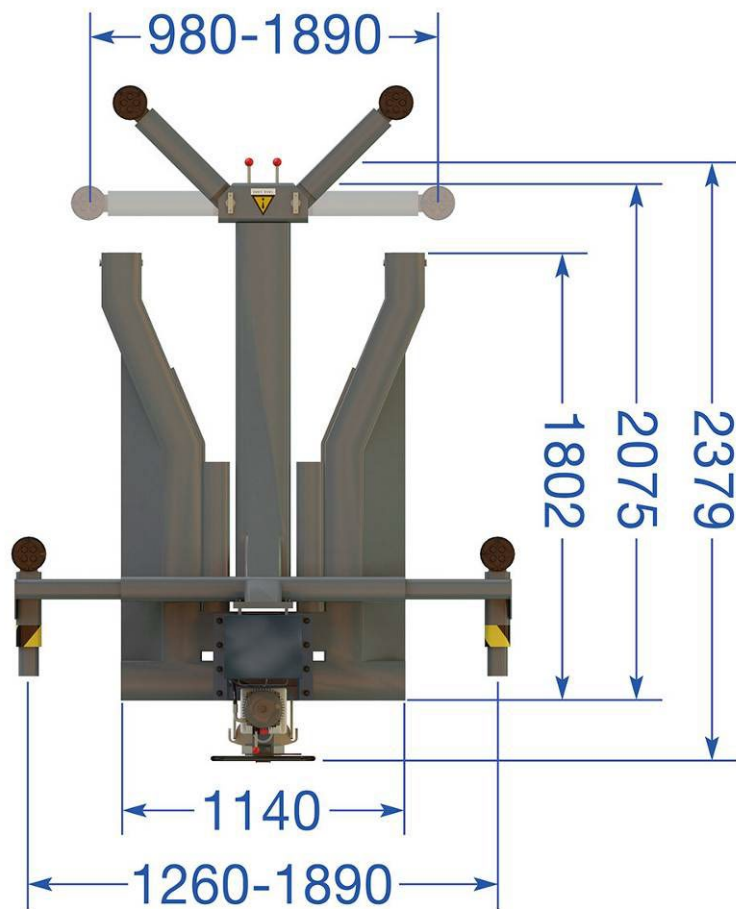
15. Appendix

15.1 Packing list

S/N	Name	Quantity
1	Column	1
2	Base	1
3	Arm	1
4	Drive unit	1
5	Control box	1
6	Hexagon screw 8.8	10
7	Spring washer	10
8	Washer	10
9	Composite seal	1
10	Hydraulic pipe connection	1
11	Hexagon nut	2
12	External hexagon screw	2
13	Hexagon socket screw	1
14	3A micro fuse	1
15	Operating instructions in English	1
16	Operating instructions in German	1
17	Warning sticker in English	1
18	Warning sticker in French	1

15.2 Dimensions of the post lift





15.3 Foundation requirements and working area

Requirements for concrete:

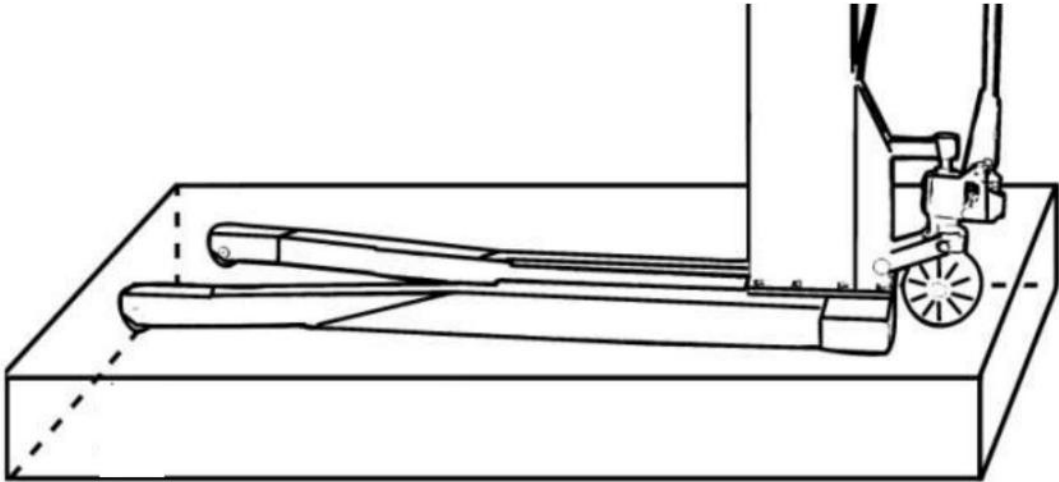
- Concrete C20/25 in accordance with DIN 1045-2 (previous designation: DIN 1045 concrete B25).
- The floor must be horizontal and have a flatness of ≤ 5 mm/m.
- Newly poured concrete must cure for at least 28 days.

Foundation dimensions:

- Ideally, the entire hall floor should be constructed of concrete C20/25 with a minimum thickness of 300 mm.

Other requirements:

- The surrounding ground must be suitable for the load, e.g. no sandy soil, etc.
- Reinforcement in the concrete is not mandatory for the proper use of the post lift, but is recommended.
- The post lift must NOT be installed on ceilings or floors with basements without authorisation. In case of doubt, the foundation should always be designed by a structural engineer; this is mandatory for ceilings or floors with basements.
- If tiles, screed, insulation and underfloor heating are used, please consult our technical department.



The following must be observed for floors subject to frost:

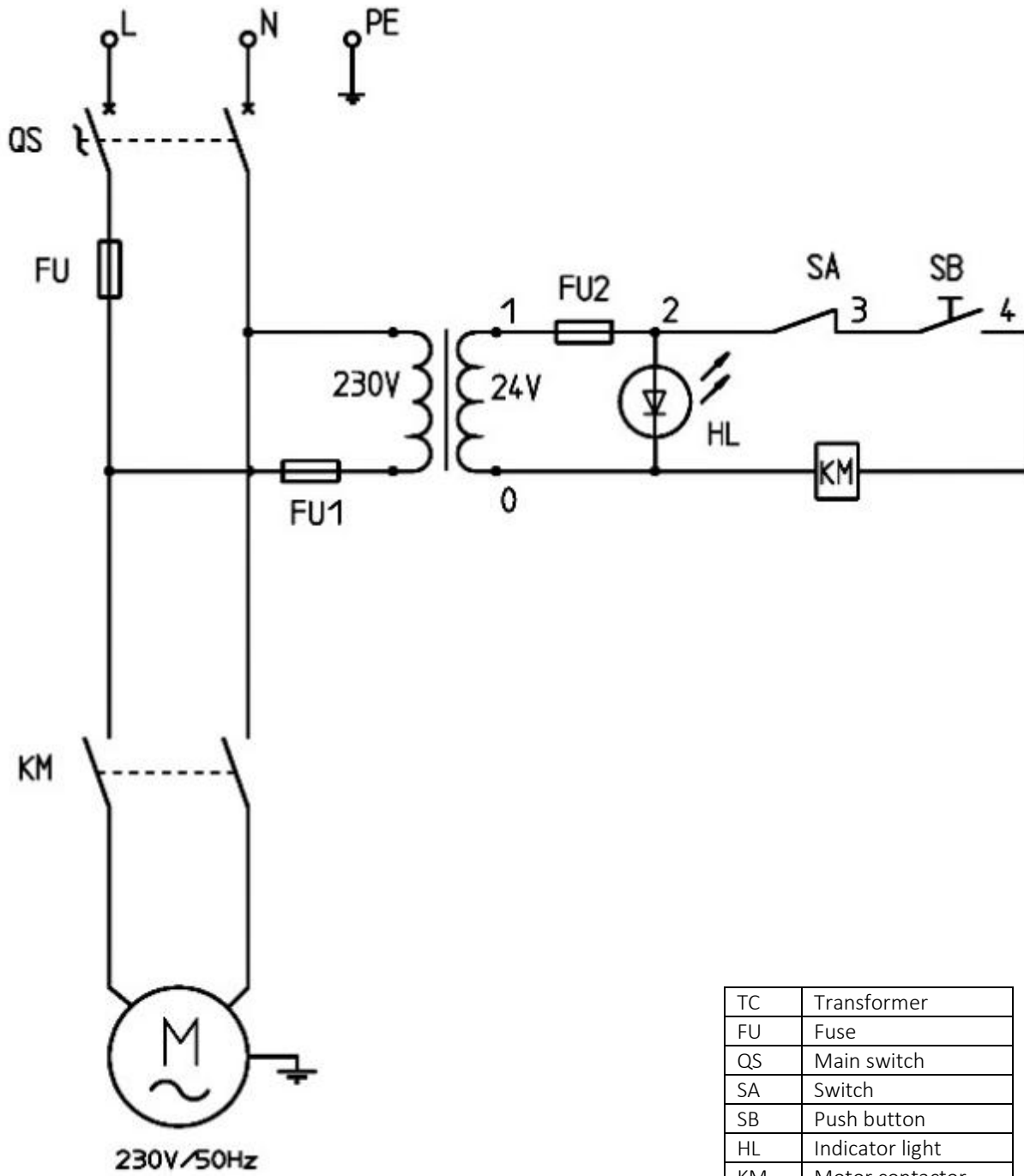
In the case of frost exposure, the concrete must comply with exposure class XF4, as dripping de-icing agents cannot be ruled out.

This results in the following minimum requirements for concrete in frost-prone areas:

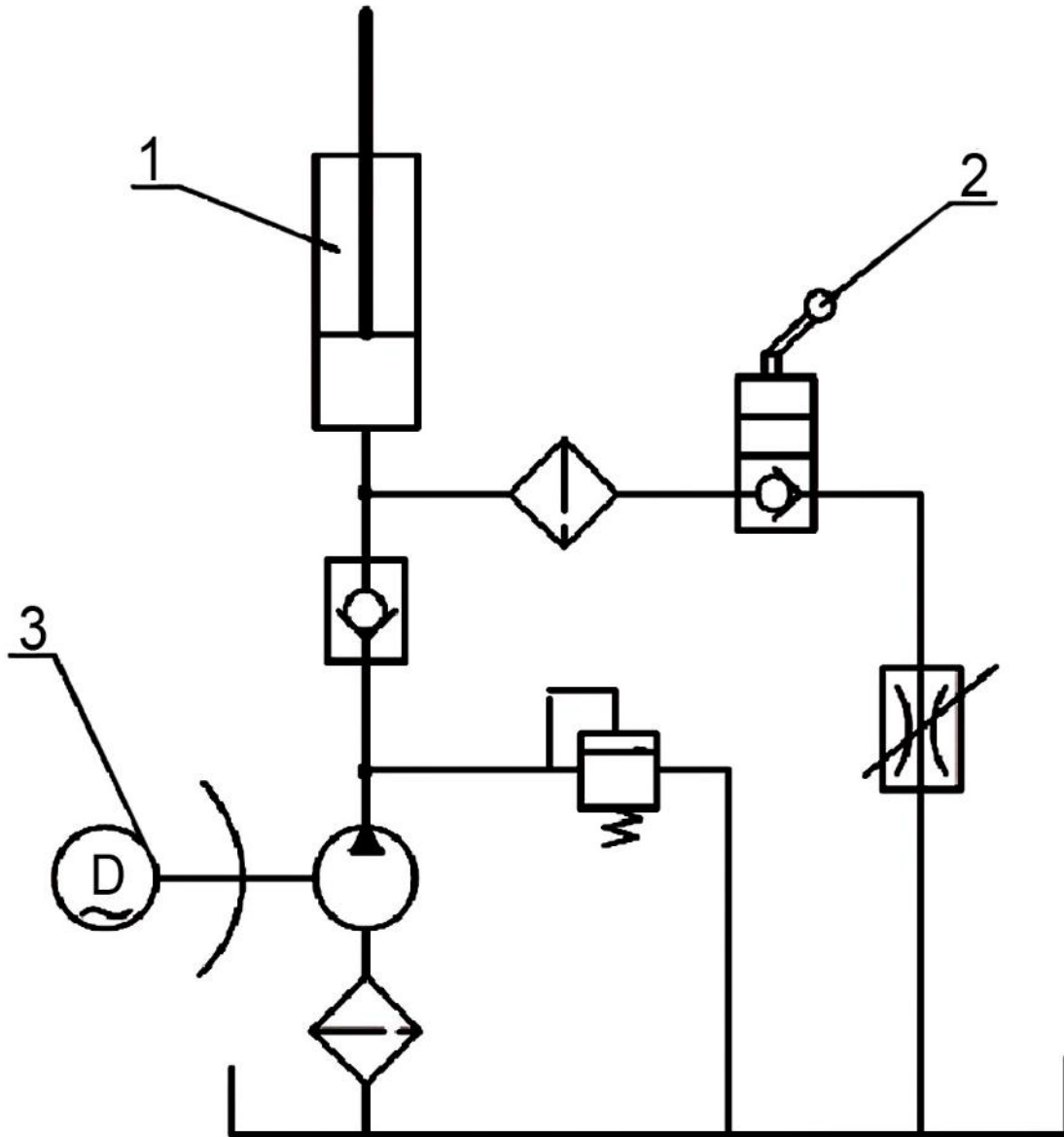
Exposure class:	XF4
Maximum w/c ratio:	0.45
Minimum compressive strength:	C30/37 (instead of C20/25)
Minimum cement content:	340 kg/m ³
Minimum air content:	4.0
Total foundation depth:	≥ 80 cm (for frost resistance)
Remaining space filled with gravel:	0/32

However, it should be noted that the post lifts are not designed for outdoor use (except for hot-dip galvanised models). Although the control box complies with IP54, the remaining electrical components, motors and limit switches are designed to a maximum of IP44.

15.4 Circuit diagram 230 V

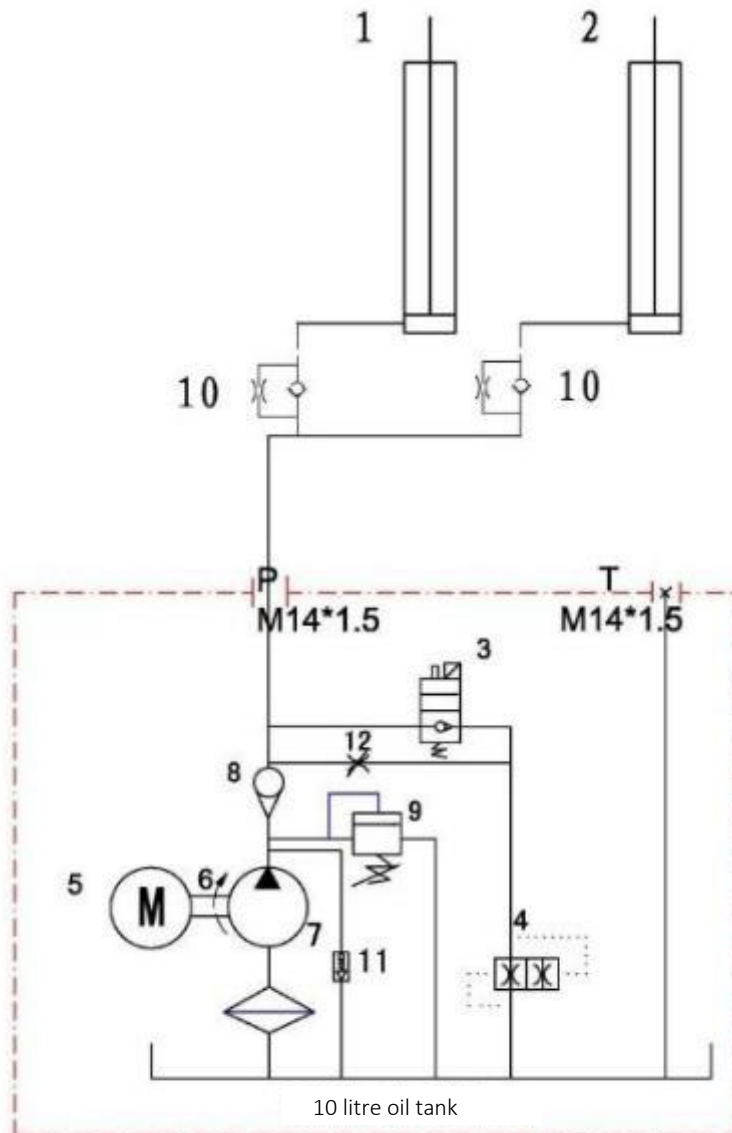


15.5 Hydraulic diagram



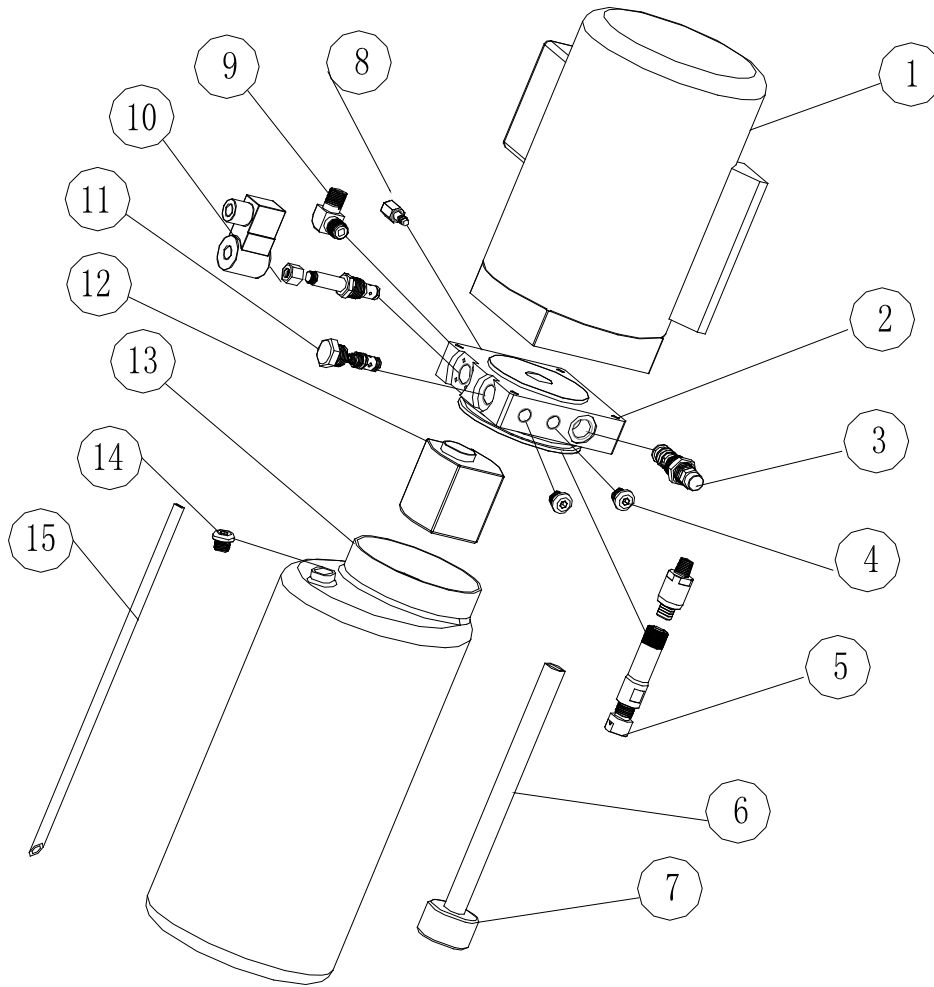
- 1. Cylinder
- 2. Drain valve
- 3. Electric pump

15.6 Hydraulic system

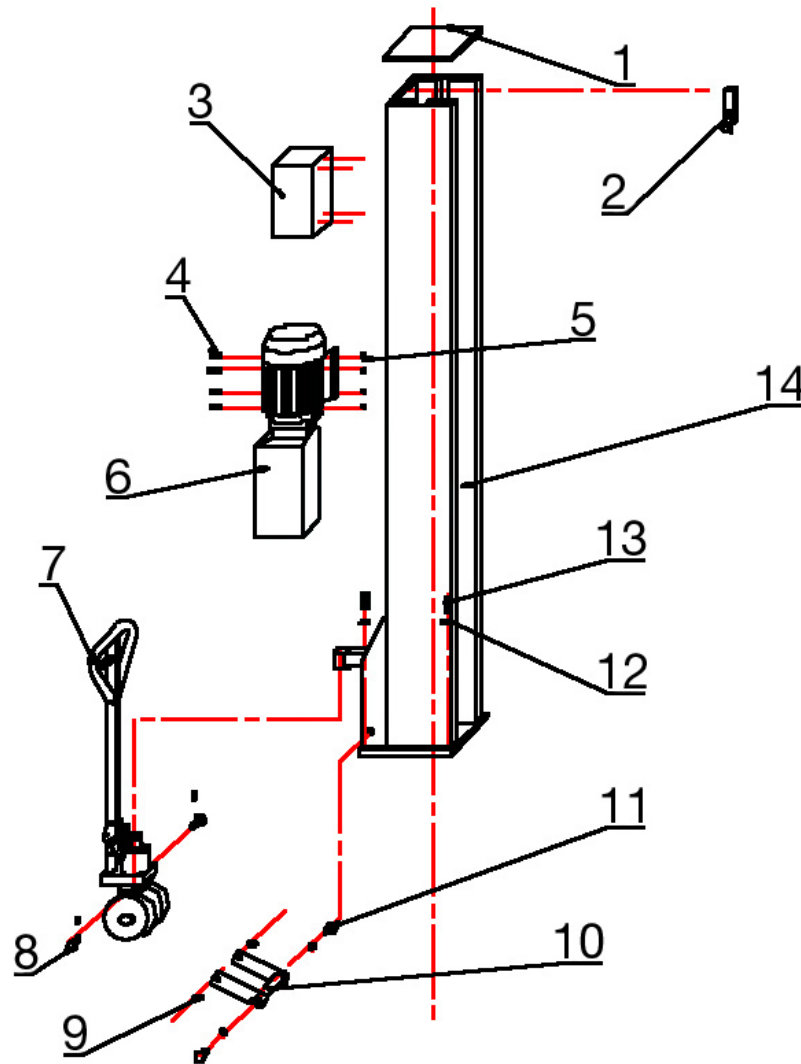


1. Master cylinder
2. Slave cylinder
3. Electromagnetic drain valve
4. Throttle valve
5. motor
6. Clutch
7. Gear pump
8. Check valve (one-way valve)
9. Pressure relief valve (max. 19 MPa)
10. Throttle check valve
11. Relief valve
12. Oil filter

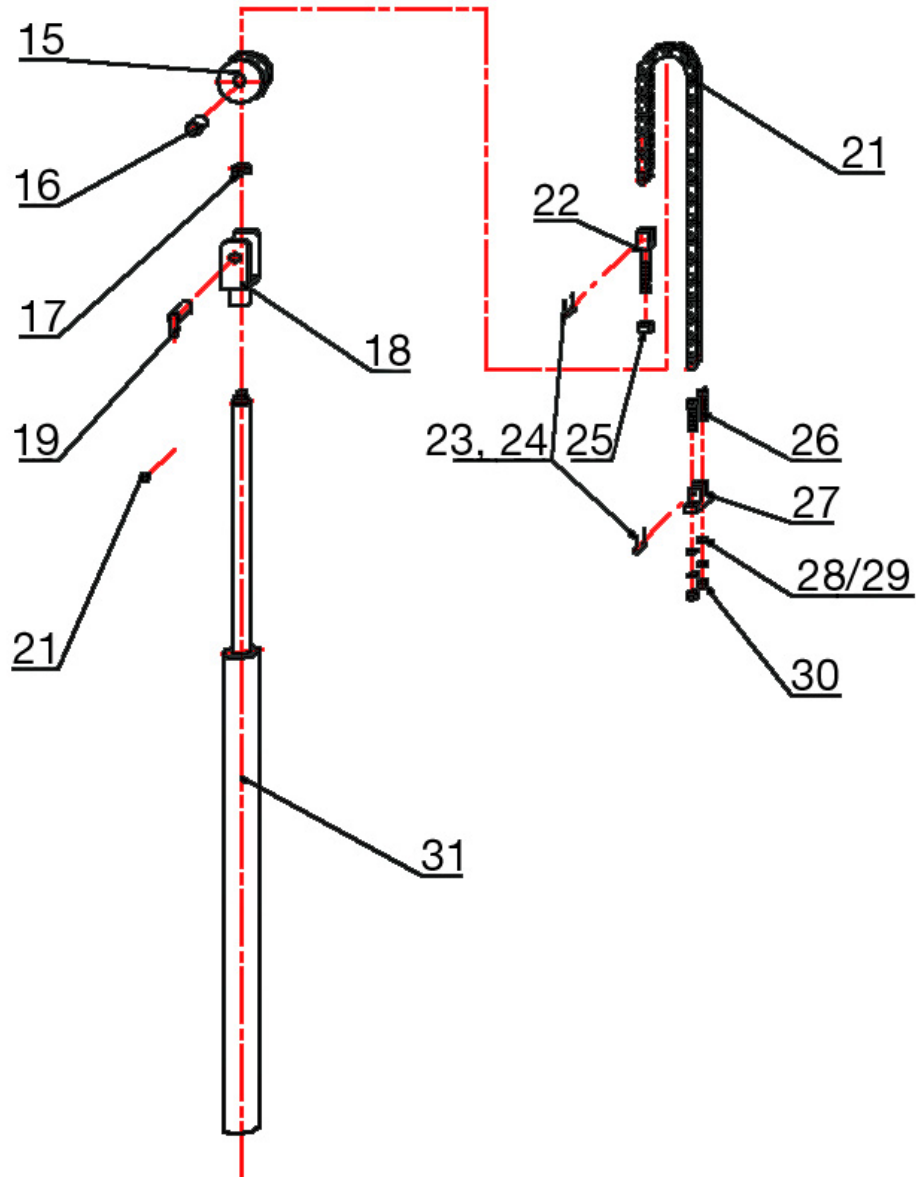
15.7 Detailed drawing, parts and spare parts list



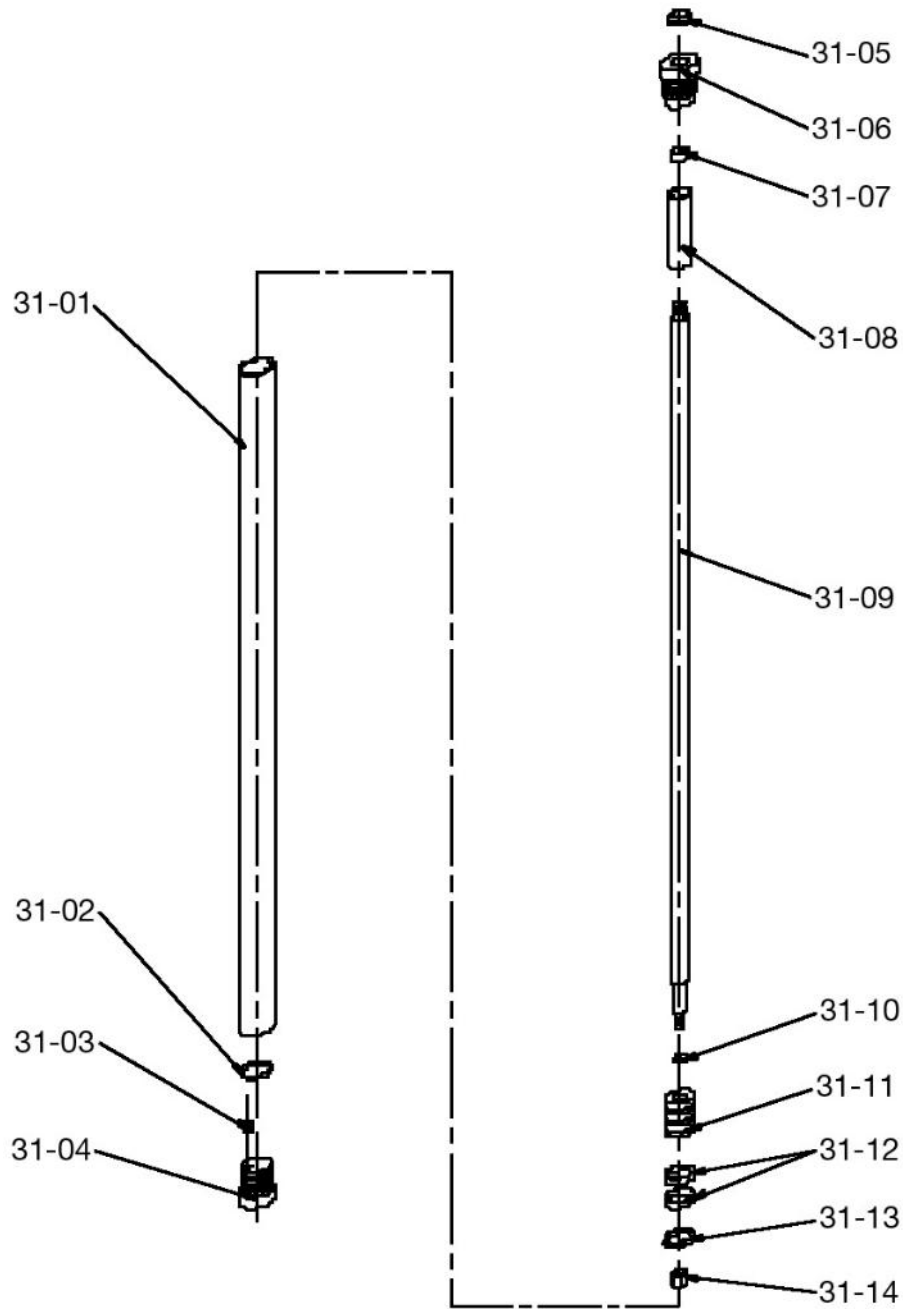
S/N	Name	Quantity
1	Motor	1
2	Hydraulic block	1
3	Pressure relief valve	1
4	Sealing screw	2
5	Pressure control valve	1
6	Oil suction pipe	1
7	Oil filter	1
8	Throttle valve	1
9	Connection	1
10	Electromagnetic drain valve	1
11	Directional valve	1
12	Gear pump	1
13	Plastic oil tank	1
14	Oil tank sealing plug	1
15	Oil return line	1



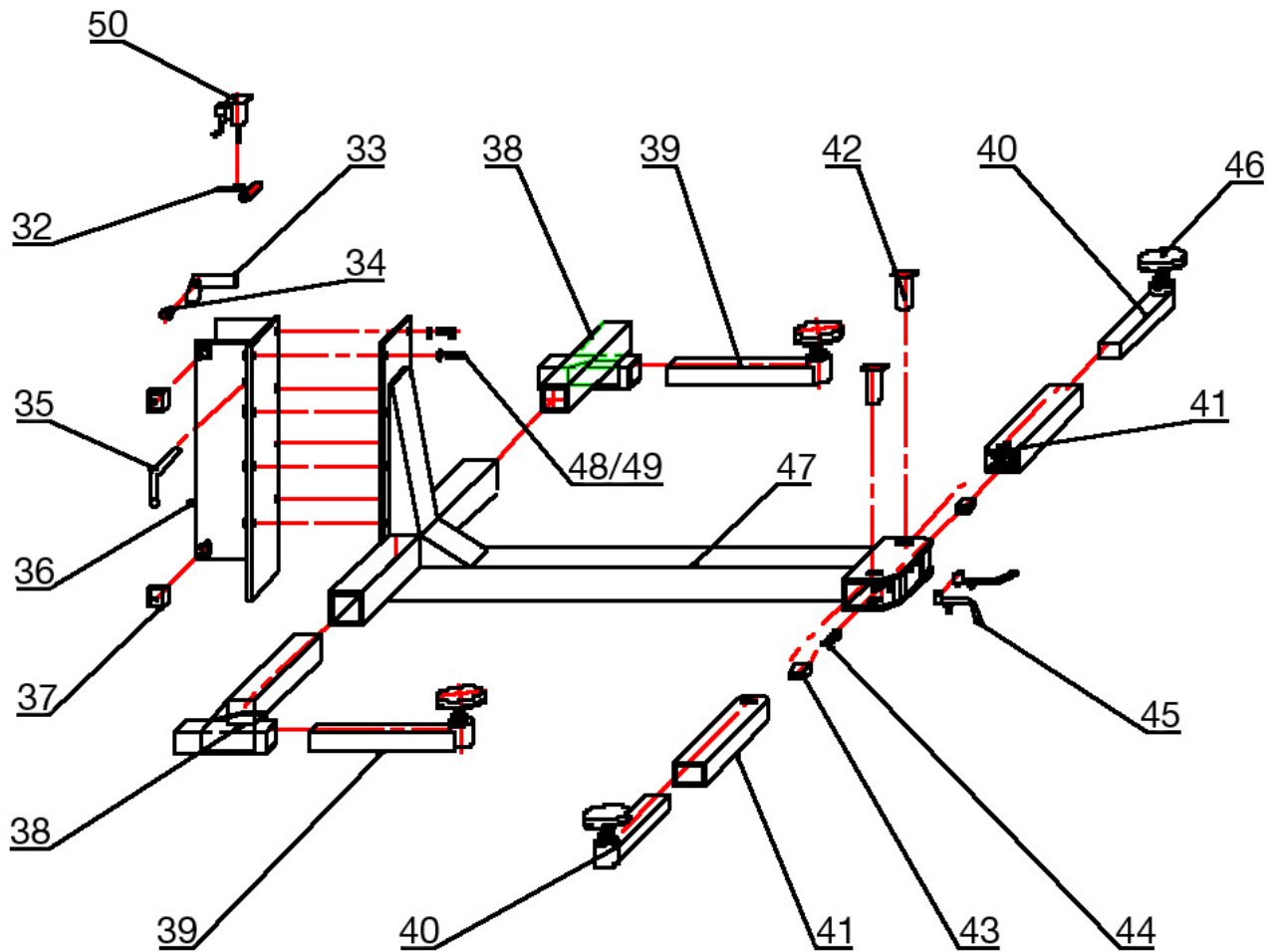
S/N	Name	Specification	Quantity
1	Column cover		1
2	Limit switch		1
3	Control box		1
3.1 (1)	Main switch 20A		1
3.1 (2)	Transformer BK-30		1
3.1 (3)	Push button		1
3.1 (4)	Contacteur CJX2-1201/24V	220/230 V	1
3.1 (5)	Fuse holder		3
3.1 (6)	Fuse 16A		3
3.1 (7)	CEE plug 16A		1
3.1 (8)	Power cord		6
4	Screw M10*30		4
5	Nut M10		4
6	Manual pump		1
7	Chassis	Mobile	1
8	Chassis bolts		2
9	Axle sleeve		2
10	Strut	Mobile	1
11	Screw M12*20		2
12	Washer		10
13	Screw		10
14	Lifting column		1



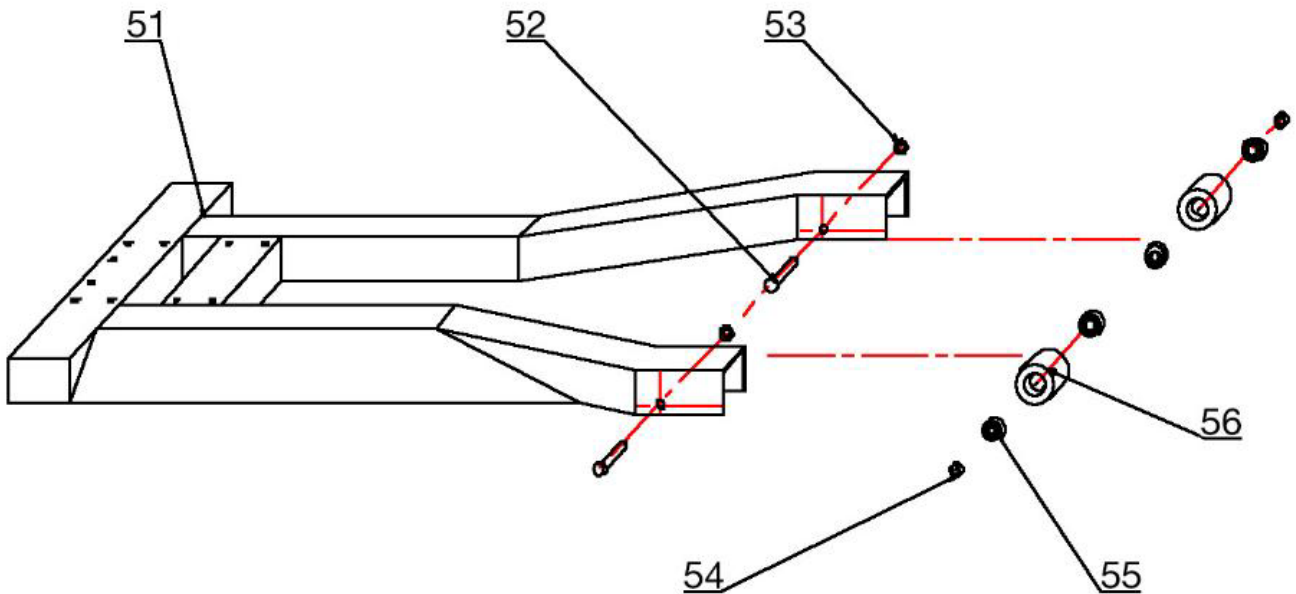
S/N	Name	Specification	Quantity
15	Chain roller		1
16	Bearing 30*50		1
17	Nut M27*15		3
18	Roller holder		1
19	Axle to roller		1
20	Screw M6*12		1
21	Duplex chain		1
22	Chain sling		1
24	Split pin 2		2
25	Nut M20		1
26	Hexagon socket screw M16*70		2
27	Chain connector		1
28	Washer		2
29	Spring washer 16		2
30	Hexagon nut M16		2
31	Hydraulic cylinder, complete		1



S/N	Name	Specification	Quantity
31-01	Cylinder tube		1
31-02	O-ring 69*5.3		1
31-03	Limiting valve		1
31-04	Cylinder cap		1
31-05	Dust seal $\Phi 45$		1
31-06	Cylinder cover		2
31-07	Centring ring		1
31-08	Limiting sleeve		1
31-09	Piston rod		1
31-10	O-rings		1
31-11	Pistons		1
31-12	Centring ring		2
31-13	U-rings		1
31-14	Hexagon nut		1



S/N	Name	Specification	Quantity
32	Release lever		1
32 (1)	Clamping pin $\Phi 4 \times 30$		1
33	Locking bolt		1
34	Pin		1
35	Handle		1
5 (1)	Plastic ball		1
36	Lifting carriage		1
37	PA glider		1
38	Cross arm left/right		2
39	Extension for cross arm		2
39.1	Extension for cross arm/Ultra		2
40	Front arm with tooth block		2
41	Extension for front arm		2
41.1	Extension for front arm/Ultra		2
42	Bolt for front support arm		1
43	Tooth block		2
44	Spring		1
45	Support arm release		2
46	Mounting plate		4
46 (1)	Rubber pad		4
46 (1.1)	Rubber pad/Ultra		4
47	Main support arm		1
48	Screw M16*40		8
49	Washer		8



S/N	Name	Specification	Quantity
51	Base frame	Mobile	1
51.1	Base frame/fixed	fixed	1
51.2	Base frame/Ultra	mobile	1
52	Rollers Axle		2
53	Retaining ring		4
54	Spacer ring		4
55	Bearing	Mobile	4
56	Wheel/roller	mobile	2

We have made every effort to provide you with complete and detailed information to ensure that installation and operation run smoothly. However, if you encounter any problems during the installation and operation of your post lift or have any questions about individual parts, please contact the expert staff at TWIN BUSCH® GmbH.



The company

Twin Busch GmbH | Amperestr. 1 | D-64625 Bensheim

hereby declares that the **1-post vehicle lift**

TW125F, TW125M | 2.500 kg
(QJYD2.5-G, QJYD2.5-Y)

Serial number:

in this configurations we have placed on the marked complies with the relevant essential health and safety requirements of the following EC-directive(s) in its/their current version(s).

EC-directive(s)

2006/42/EC
2014/35/EU

Machinery
low voltage

Applied harmonized standards and regulations

EN 1493:2022
EN ISO 12100:2010
EN 60204-1:2018

Vehicle Lifts
Safety of Machinery – Design
Safety of Machinery – Electrical Equipment

CE Certificate

N8MA 123192 0002 Rev. 00
M6A 123192 0001 Rev. 00

date of issue: 24.02.2024
place of issue: München
technical file no.: 646642306701

Certification body

TÜV SÜD Product Service GmbH
Ridlerstraße 65
80339 München, Deutschland
Notified Body Appointment No.: 0123

In the case of improper use, as well as in the case of assembling, modification or changes which are not agreed with us, this declaration will lose its validity.

Authorized person to compile technical documentation is: Michael Glade (adress as below)



TWIN BUSCH GmbH
Amperestr. 1 · 64625 Bensheim
Tel. 06251 / 70585-0 · Fax: 70585-29

Authorized signatory: Michael Glade
Bensheim, 04.03.2024 Qualitätsmanagement



You can find more products at:

twinbusch.co.uk